



graceandglory
a charlotte mason style program

2016-17 Catalog



**2016-17 Vision Verse (Statement) –
from Ephesians 1:18-19a (MSG)**

I ask the God of our Master, Jesus Christ, the God of glory – to make you intelligent and discerning in knowing Him personally; your eyes focused and clear, so you can see exactly what it is He is calling you to do... grasp the immensity of this glorious way of life, He has for His followers. Oh the utter extravagance, of His work in those who trust Him.

Welcome! At Grace and Glory, you will find a Christ-centered community of hybrid homeschooling families. We promote the educational methods of Charlotte Mason, Ambleside Schools and the gentle art of life learning. Our school is known for our passion in ministry and the arts, as well as unique campus enrichment opportunities. Grace and Glory leaders are dedicated, diverse and experienced, sharing a wide range of talents and services.

*As a homeschool graduate, I have compassion and understanding for the needs of our students; as a home educating mother, I will be entering my 8th year of teaching and enjoy participating as an active member of our school community. I encourage you to explore all that GGHS has to offer. **Michaela Roekle – Administrator***



DIRECTORY

- Membership Options pg 2
- Services pg 2
- Campus Classes pg 3-5
- Hot Lunch Program pg 6
- Financial Policies pg 6
- Wild & Free Adventure Club pg 6

by God's Grace, for God's Glory

School motto: based on the 1922 hymn by Helen H. Lemmel ~
Turn your eyes upon Jesus,
look full in His wonderful face, and the
things of earth will grow strangely
dim, In the light of His glory and grace.

2016-17 Registration:

\$75.00 per family, Registration Fee, due in full at the time of enrollment. No refunds once submitted.
\$25.00 per child, Materials Fee, due for those enrolling in our Campus Classes.

Membership Options

PSP Plus Members: Registration Fee (+) \$350.00 annually

Includes enrollment in our PSP Academy, adding your students to our private school affidavit. This is a family fee, regardless of how many students you're enrolling.

Monthly payment plans are available from August-May, for those who enroll by Aug 22, 16.

Class Members Only: Registration Fee (+) \$10per month, per student

Includes participation in campus classes, for those who belong to an outside PSP, Charter School, or file independently. *This fee is in addition to the cost of our campus class program.*

Activity Members Only: \$50.00 enrollment

Receive an off-campus family activity membership to participate in field trips, events, clubs.

*to participate in on-campus activities, a family Registration Fee must also be submitted.

**free for PSP Plus & Class Members

Services

- **Counseling:** free for PSP Plus Members/\$100 per session for others.
- **Private School Identity**
 - School Portraits by Lesley Lukens Photography
 - Yearbook/Teacher and Student ID CARDS
 - Lands' End School Logo Apparel/Gear
 - Records, Cum Files, Transcripts, Diploma
- **CHEA Support Network Members**
 - HSLDA Members
 - Family Protection Ministry Supporters
- **ABC Guidance Counseling Partnership**
- **Scholastic Book Club | Usborne Book Distributor**
- **Weekly Campus Classes**
- **Monthly Activities**
- **Seasonal/Holiday Celebrations, Events and Outreach**
- **Annual Christmas Show and Spring Showcase**
- **Parent Training, Workshops, Events, etc.**

freedom from....

government control, mandated vaccinations, student testing and student data collection.

safety with...

private school enrollment, group support, records maintained, and gentle accountability.

the blessing of....

community, group discount activities, class discount rates, Christ-centered ministry.

Campus Classes



Kindergarten: K5

for students ages 5+

Time: 9am-2pm | Duration: 30 Select Mondays
August 29th through May 22nd

Citizen Science/Social Studies, Circle Time, Poetry, Picture Study, Show & Tell, Art Centers, Music, Bible Scripture Memory, PE/Games, Snack, Lunch, and Recess.

Cost: \$65.00 per student, per month for PSP Plus Members. (\$75.00 rate, all others) | Full Day Rate Only

- **Citizen Science and Social Studies:** this period will take students on a journey through studying the occupations of numerous community helpers and heroes, up close and personal with special guest visitors; students will read, explore and learn how they can be citizens who care, contribute, collect, clean, and cooperate to make our town a better place.
- **Circle Time, Show & Tell, Poetry, Picture Study:** foundational early-learning activities, promoting group/peer socialization and the Charlotte Mason educational basics.
- **Art Centers:** during this period, students will enjoy hands-on exploration centers in a collaborative Montessori-Charlotte Mason style, rotating between stations.
- **Music:** students will learn songs and choreography movements, to perform in our annual Christmas show.
- **Bible Scripture Memory, PE/Games, Snack, Lunch, Recess (self-explanatory)**



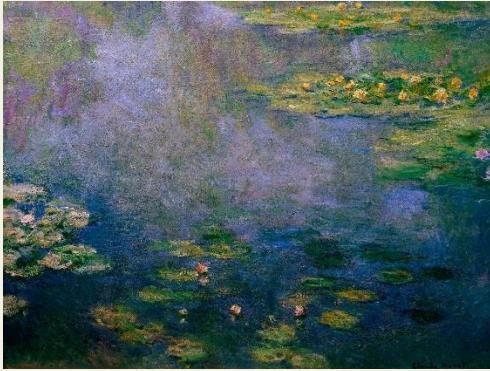
First Grade

Time: 9am-2pm | Duration: 30 Select Mondays
August 29th through May 22nd

Nature Study Science, Narnia Art Adventures, Music, Reformation History Fair, BraveWriter Lifestyle Learning, Hero Study, Bible Sword Drill, PE/Games, Snack, Lunch and Recess.

Cost: \$65.00 per student, per month for PSP Plus Members. (\$75.00 rate, all others) | Full Day Rate Only

- **Nature Study Science:** this subject lays the foundation for formal science studies, giving the child a relationship, ownership, and stewardship of God's earth; Nature study prepares the child to worship our creator as we recognize His touch in all creation. Plants, Animals, Weather, Seasons and more will be covered.
- **Narnia Art Adventures:** bringing CS Lewis' "Chronicles of Narnia" books to life; exploring visual imagery, fascinating characters and creatures with arts, crafts, costuming and literature study.
- **Music:** students will learn songs and choreography movements, to perform in our annual Christmas show.
- **Reformation History Fair:** exposing students to the lives of Martin Luther, John Calvin, and Martin Bucer, in a semester study of the Reformation Period; historical stories, physical activities and exhibitions, architecture, decorations, music & hymn study in a collaborative effort between students and families of multiple grades through our school community. (Doorposts curricula)
- **Brave Writer Lifestyle Learning:** natural and relaxed word play, narration, copywork, poetry tea-times, picture study, puppetry, story-telling, literacy building, recitation, hero study and more.
- **Bible Scripture Memory Beginner Sword Drill, PE/Games, Snack, Lunch, Recess**



Second, Third and Fourth Grades

Time: 9am-2pm | Duration: 30 Select Mondays
August 29th through May 22nd

Nature Study: Survival Science, Narnia Art Adventures, Music, Reformation History Fair, BraveWriter Lifestyle Learning, Hero Study, JR Bible Sword Drill, PE/Games, Snack, Lunch, Recess, Assembly

Cost: \$65.00 per student, per month for PSP Plus Members. (\$75.00 rate, all others) | Full Day Rate Only

- **Nature Study Survival Science:** any child can get lost while camping, on a hike or even a field trip...this course will teach and prepare young adventurers with the basic survival skills needed if they were ever to find themselves lost or in a dangerous situation. Including but not limited to; the study of poisonous vs edible plants, animal encounters, extreme weather conditions, map skills, first aid, seeking shelter.
- **Narnia Art Adventures:** bringing CS Lewis' "Chronicles of Narnia" books to life; exploring visual imagery, fascinating characters and creatures with arts, crafts, costuming and literature study.
- **Music:** students will learn songs and choreography movements, to perform in our annual Christmas show.
- **Reformation History Fair:** exposing students to the lives of Martin Luther, John Calvin, and Martin Bucer, in a semester study of the Reformation Period; historical stories, physical activities and exhibitions, architecture, decorations, music & hymn study in a collaborative effort between students and families of multiple grades through our school community. (Doorposts Curricula)
- **Brave Writer Lifestyle Learning:** natural and relaxed word play, narration, copywork, poetry, picture study, story-telling, simple writing, literacy building, recitation, hero study and more.
- **Bible Sword Drill, PE/Games, Snack, Lunch, Recess, Assembly**



Fifth, Sixth, Seventh, Eighth Grades

Time: 9am-2pm | Duration: 30 Select Mondays
August 29th through May 22nd

Nature Study: Survival Science, Narnia Art Adventures, Reformation History Fair, BraveWriter Lifestyle Learning, Hero Study, Performance Bible Sword Drill, Photography, PE/Games, Snack, Lunch, Recess, Assembly.

Cost: \$65.00 per student, per month for PSP Plus Members. (\$75.00 rate, all others) | Full Day Rate Only

- **Nature Study Survival Science:** any child can get lost while camping, on a hike or even a field trip...this course will teach and prepare young adventurers with the basic survival skills needed if they were ever to find themselves lost or in a dangerous situation. Including but not limited to; the study of poisonous vs edible plants, animal encounters, extreme weather conditions, map skills, first aid, seeking shelter.
- **Narnia Art Adventures:** bringing CS Lewis' "Chronicles of Narnia" books to life; exploring visual imagery, fascinating characters and creatures with arts, crafts, costuming and literature study.
- **Reformation History Fair:** exposing students to the lives of Martin Luther, John Calvin, and Martin Bucer, in a semester study of the Reformation Period; historical stories, physical activities and exhibitions, architecture, decorations, music & hymn study in a collaborative effort between students and families of multiple grades through our school community. (Doorposts Curricula)
- **Brave Writer Lifestyle Learning:** natural and relaxed word play, narration, copywork, poetry, picture study, story-telling, literacy building, recitation, hero study and more. Writing required.
- **Performance Bible Sword Drill:** students will train, drill, compete and perform.
- **PE/Games, Snack, Lunch, Recess, Assembly**
- **Photography. See Below.**



Eighth, Ninth-Twelfth Grades

Block I or Block II | Duration: 30 Select Mondays

August 29th through May 22nd

Block I: Inductive Bible Survey and A Year of CS Lewis

Block II: Chronicles of Narnia Art + (Choice Period)

Cost: \$40 per month, per student, per block for PSP Plus Members (\$50.00 block rate, all others) OR \$70 per month, per student full day rate (\$80.00 full day rate, all others)

- **Inductive Bible Survey with Mr. Hays: I Semester: Hebrews | II Semester: Romans**
Students will read through each book of the Bible, chapter by chapter, conducting an in-depth study; writing, sharing and discussing, identifying main ideas, defining key words, greek word research, compare and contrast, narration and more. (using SimplyCharlotteMason consumable books)
- **A Year of CS Lewis with Mr. Hays**
An exciting unit study, exploring the author and select writings of CS Lewis. Reading, writing, report and discussion. Titles will be selected by the instructor. *will meet highschool literature requirements. **audio or paperback books acceptable for different learning styles.

Block Break

- **Chronicles of Narnia Art with Miss Stewart**
Bringing the CS Lewis' "Chronicles of Narnia" books to life; exploring visual imagery, fascinating characters and creatures with art techniques, mixed media, costuming and movies-as-literature study.
- **Photography Exploration with Mrs. Roekle**
Students will learn the basic elements and aspects of taking good pictures, from a professional photographer. Camera basics, composition, color, weather and nature photography, seasonal photography, people photography, ministry photography, photography challenges, black and white, travel, throwbacks, and more. Students will keep a photography journal and be required to document work/progress, share images, and create projects. All students will need a DSLR type of camera.

Hot Lunch Program:

Mondays on campus - hot lunch delivery, provided by "Villa Amalfi Ristorante" .
\$4.00 per student, all grades.

Must be submitted by 9:00am each Monday; cash or check only.

Set menu includes: Pizza, Carrot Sticks, Ice Cream and choice of Milk/Water/Lemonade.

2016-17 Financial Policies:

Registration must be paid in full at the time of enrollment. No refunds once submitted.

PSP Plus Membership is paid in full;

a monthly payment plan option is available for families who enroll by August 22nd 2016.

*monthly payments are due the first Monday of each month.

Campus Class tuition is paid monthly, due on the first Monday of the month, via cash or check.

Activity Membership must be paid in full at the time of enrollment.

Wild and Free Adventure Club:



FREE for those participating in our PSP and/or Monday Campus Classes.

All others, pay \$50.00 annual club fee. Open to all ages Pre-Highschool.

18 outings through Aug-May; nature study, photography, adventures.

Grace and Glory Academy

951.638.4170

PO BOX 2797 Corona CA 92878

www.graceandgloryacademy.org

info@graceandgloryacademy.org

